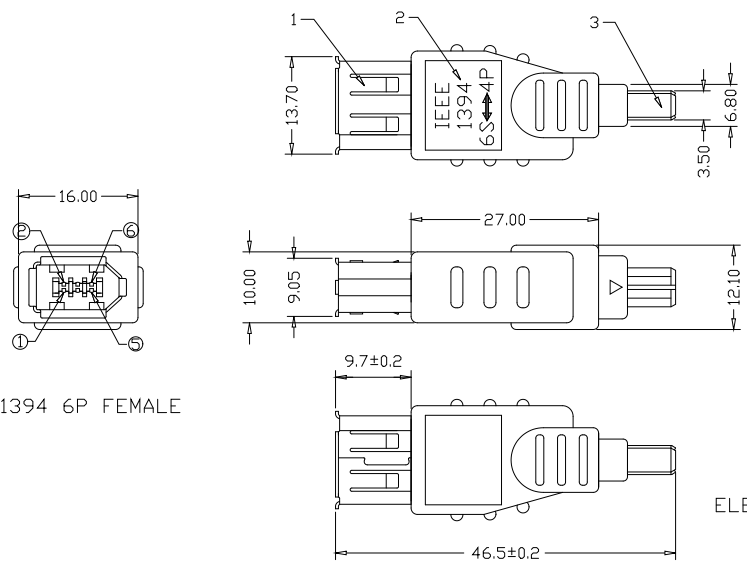


LTR	REV.	DESCRIPTION	DATE



1394 6P FEMALE

1394 4P MALE

ELECTRONIC TEST:
 1.OPEN/SHORT/INTERMITTE:100%.
 2.INSULATION RESISTANCE:10MΩ
 3.CONTACT RESISTANCE:100Ω.
 4.THE WIRES THAT THEY ARE SOLDERED IN THE PIN #5 AND #6 OF THE 1394 6P FEMALE ARE THROUGH THE CORE.
 PACKING:SEE P-0039 REV.C PACKING DRAWING
 EAN CODE:4016032076162

PIN ASSIGNMENT	1394 6P FEMALE	5	6	3	4	SHELL
	1394 4P MALE	1	2	3	4	SHELL

NO.	DESCRIPTION	UNIT	QTY
5	INTERNAL WIRE:UL1007 30AWG 7 STRAND L:17MM	PCS	4
4	CORE:F18RID6.4mm*3.2mm*3.5mm	PCS	1
3	1394 4P TYPE MALE INSULATION:BLACK IN COLOR	PCS	1
2	PVC MOLDED WITH COPPER FOIL BLACK IN COLOR		
1	1394 6P TYPE FEMALE INSULATION:BLACK IN COLOR	PCS	1

Tolerance	Inch	M/M	NEOSTAR TECHNOLOGY CO., LTD.
.X	.015	.30	
.XX	.010	.10	
.XXX	.005	.05	
Draw	Title		
KIKI 04/23	IEEE 1394 ADAPTOR 6/F-4		
Check	App'd	Customer	E-SSM
Engr	Scale	NONE	Units
		m/m	Third Angle Projection
	Dwg No. 160-0716	REV:A	Sheet 1/1

