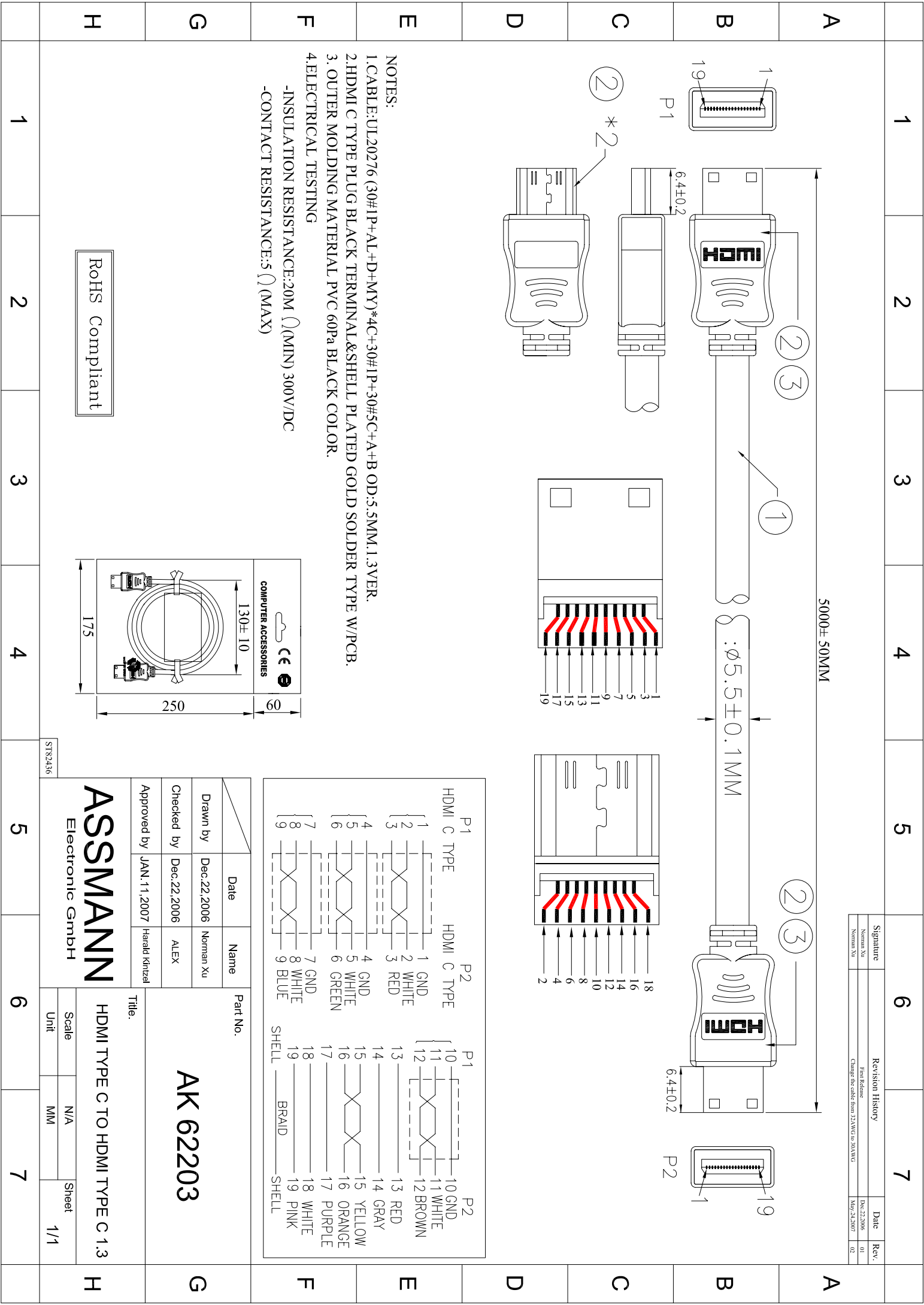
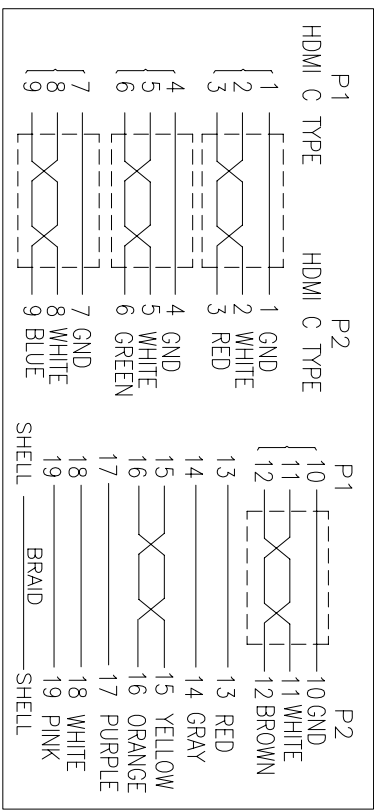
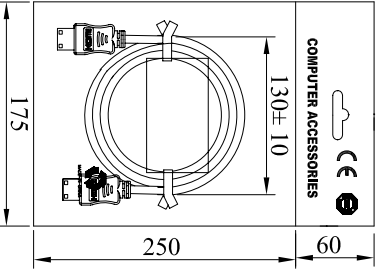


Signature	Date	Rev.
Norman Xu	Dec.22.2006	01
Norman Xu	Dec.22.2007	02

Revision History	Date	Rev.
First Release	Dec.22.2006	01
Change the cable from 23AWG to 20AWG	May.24.2007	02



- NOTES:
- 1.CABLE:UL20276 (30#IP+AL+D+MY)\*4C+30#IP+30#5C+A+B OD:5.5MM.1.3VER.
  - 2.HDMI C TYPE PLUG BLACK TERMINAL&SHELL PLATED GOLD SOLDER TYPE W/PCB.
  3. OUTER MOLDING MATERIAL PVC 60Pa BLACK COLOR.
  - 4.ELECTRICAL TESTING
- INSULATION RESISTANCE:20M  $\Omega$  (MIN) 300V/DC  
 -CONTACT RESISTANCE:5  $\Omega$  (MAX)



Date	Name	Part No.
Dec.22.2006	Norman Xu	AK 62203
Dec.22.2006	ALEX	
JAN.11.2007	Harald Kitzel	

Title:  
HDMI TYPE C TO HDMI TYPE C 1.3

**ASSMANN**  
Electronic GmbH

Scale: N/A  
Unit: MM

Sheet: 1/1

ST82436

1	2	3	4	5	6	7	A
1	2	3	4	5	6	7	B
1	2	3	4	5	6	7	C
1	2	3	4	5	6	7	D
1	2	3	4	5	6	7	E
1	2	3	4	5	6	7	F
1	2	3	4	5	6	7	G
1	2	3	4	5	6	7	H