



1. Carefully remove cover from HD enclosure



2. Insert SATA hard drive



3. If would like to use PATA hard disk, please connect little PCBBA with big PCBBA



4. Insert PATA hard drive



5. Insert PATA hard drive with HD power cable



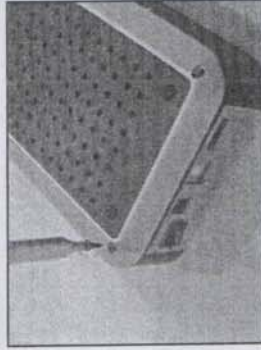
6. Securely tighten screws from the bottom of HD enclosure to fix hard disk (4pcs short screws)



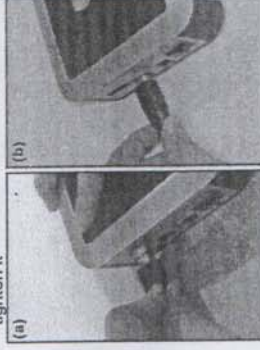
7. Assemble PCB shielding above PCBBA



8. Replace cover onto HD enclosure



9. Use screws (2pcs longer, 2pcs shorter) from the bottom of HD enclosure to tighten it



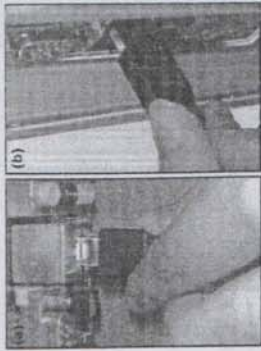
10a. If would like to use eSATA cable, plug eSATA cable into the HD enclosure



10b. If would like to use USB cable, plug USB into the HD enclosure

11a. After plugging eSATA cable into the HD enclosure, plug adapter into HD enclosure

11b. After plugging USB into the HD enclosure, plug adapter into HD enclosure

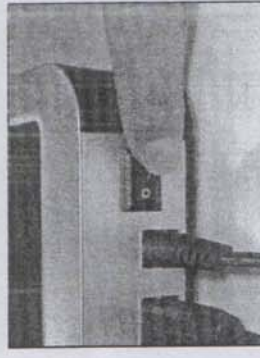


12a. Plug eSATA cable into PC or laptop



12b. Plug USB cable into PC or laptop

13. Plug adapter



14. Press the switch for power on