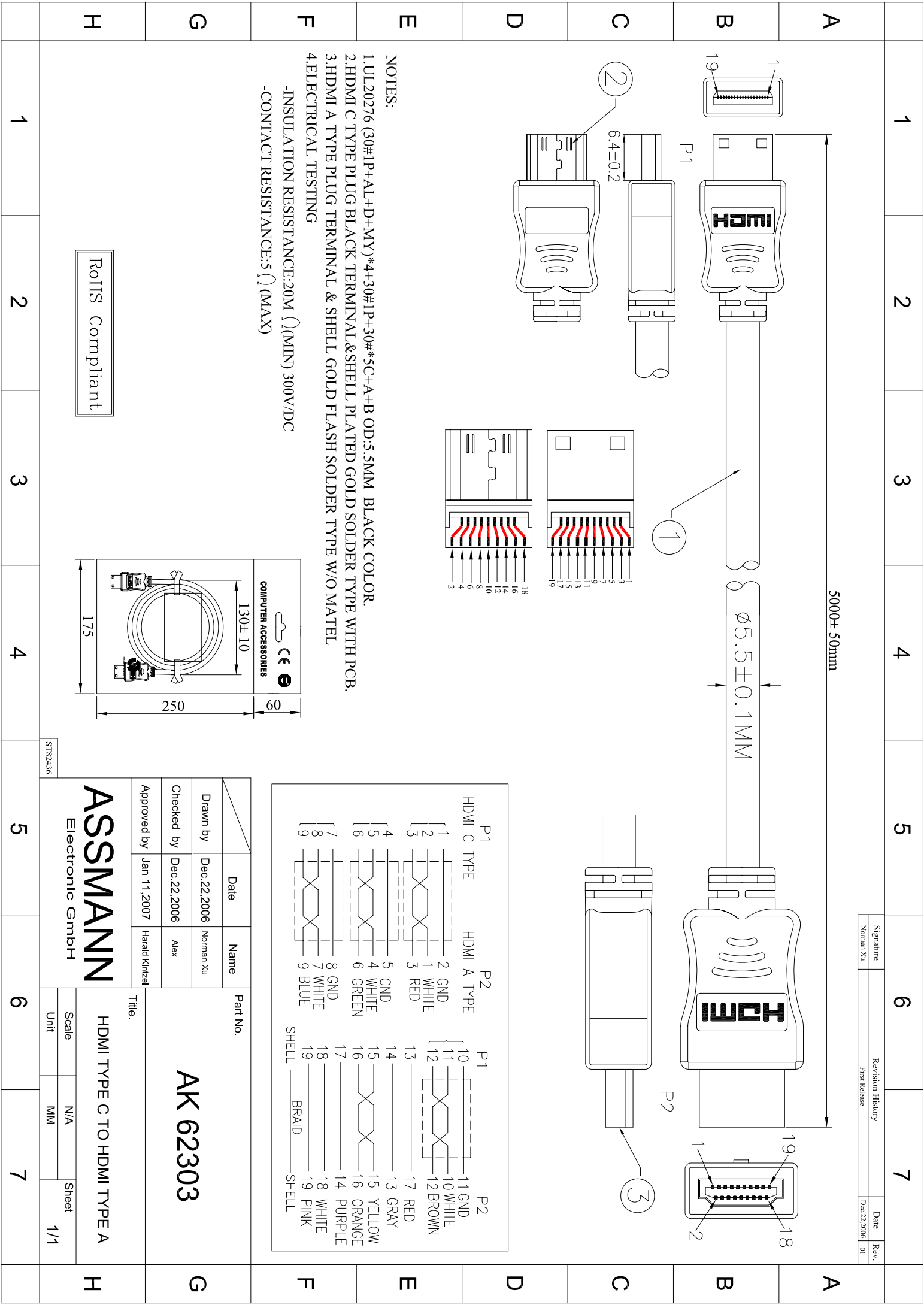
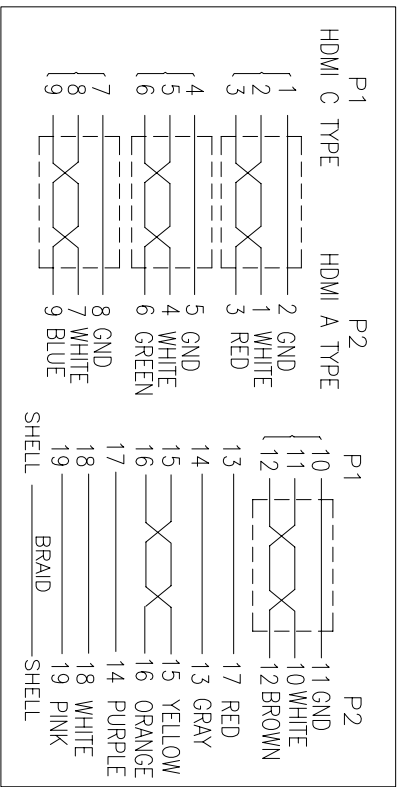
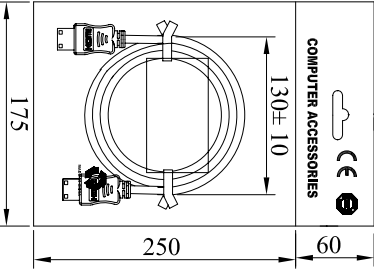


Signature	Date	Revision History	Rev.
Norman Xu	Dec.22.2006	First Release	01



- NOTES:
1. UL20276 (30#1P+AL+D+MY)\*4+30#1P+30#5C+A+B OD:5.5MM BLACK COLOR.
  2. HDMI C TYPE PLUG BLACK TERMINAL&SHELL PLATED GOLD SOLDER TYPE WITH PCB.
  3. HDMI A TYPE PLUG TERMINAL & SHELL GOLD FLASH SOLDER TYPE W/O MATEL
  4. ELECTRICAL TESTING
- INSULATION RESISTANCE:20M ( )(MIN) 300V/DC  
 -CONTACT RESISTANCE:5 ( )(MAX)



Date	Name	Part No.
Dec.22.2006	Norman Xu	AK 62303
Dec.22.2006	Alex	
Jan 11.2007	Harald Krizel	

Title: HDMI TYPE C TO HDMI TYPE A

**ASSMANN**  
Electronic GmbH

Scale	N/A	Sheet
Unit	MM	1/1

RoHS Compliant

ST82436