



4-PORT NETWORK USB HUB



Quick Installation Guide

Copyright Notice

Copyright Incorporated 2009. All rights reserved.

Disclaimer

Incorporated shall not be liable for technical or editorial errors or omissions contained herein; nor for incidental or consequential damages resulting from furnishing this material, or the performance or use of this product.

Incorporated reserves the right to change product specifications without notice. Information in this document may change without notice.

Trademarks

Microsoft, Windows XP and VISTA are registered trademarks of the Microsoft Corporation. All other brand and product names mentioned herein may be registered trademarks of their respective owners.

Customers should ensure that their use of this product does not infringe upon any patent rights. Trademarks mentioned in this publication are used for identification purposes only and are properties of their respective companies.

Ensure Packaging Contents

- 4 Ports USB Server Hub
- CD Utility (included User Manual)
- Power Adaptor DC 5V
- Quick Installation Guide

System Requirement (Suggestion)

XP System:

CPU: PIII 1.0 GHz equivalent or better
Memory: 512MB or more

VISTA System:

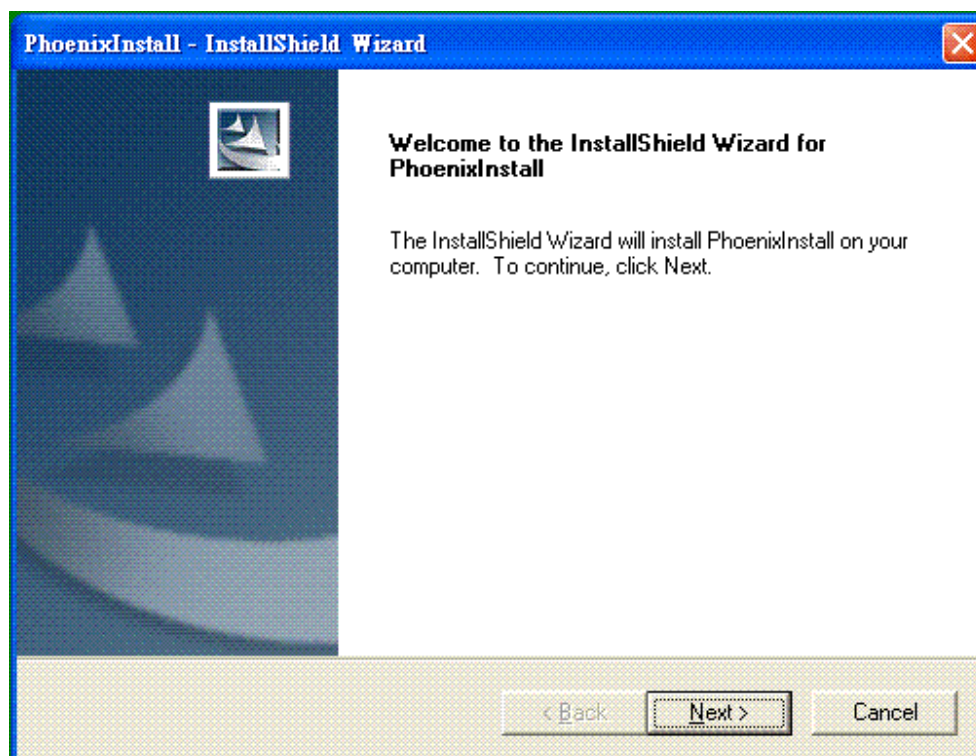
CPU: P4 3.0 GHz equivalent or better
Memory: 1GB or more.

Installation

To install the USB Server Hub program, please double click the USB Server Hub setup file. A dialog box should pop up to prompt you to choose desired installing language. There are two choices: English and Traditional Chinese.



After choosing the language, click on OK. The InstallShield Wizard will start automatically.

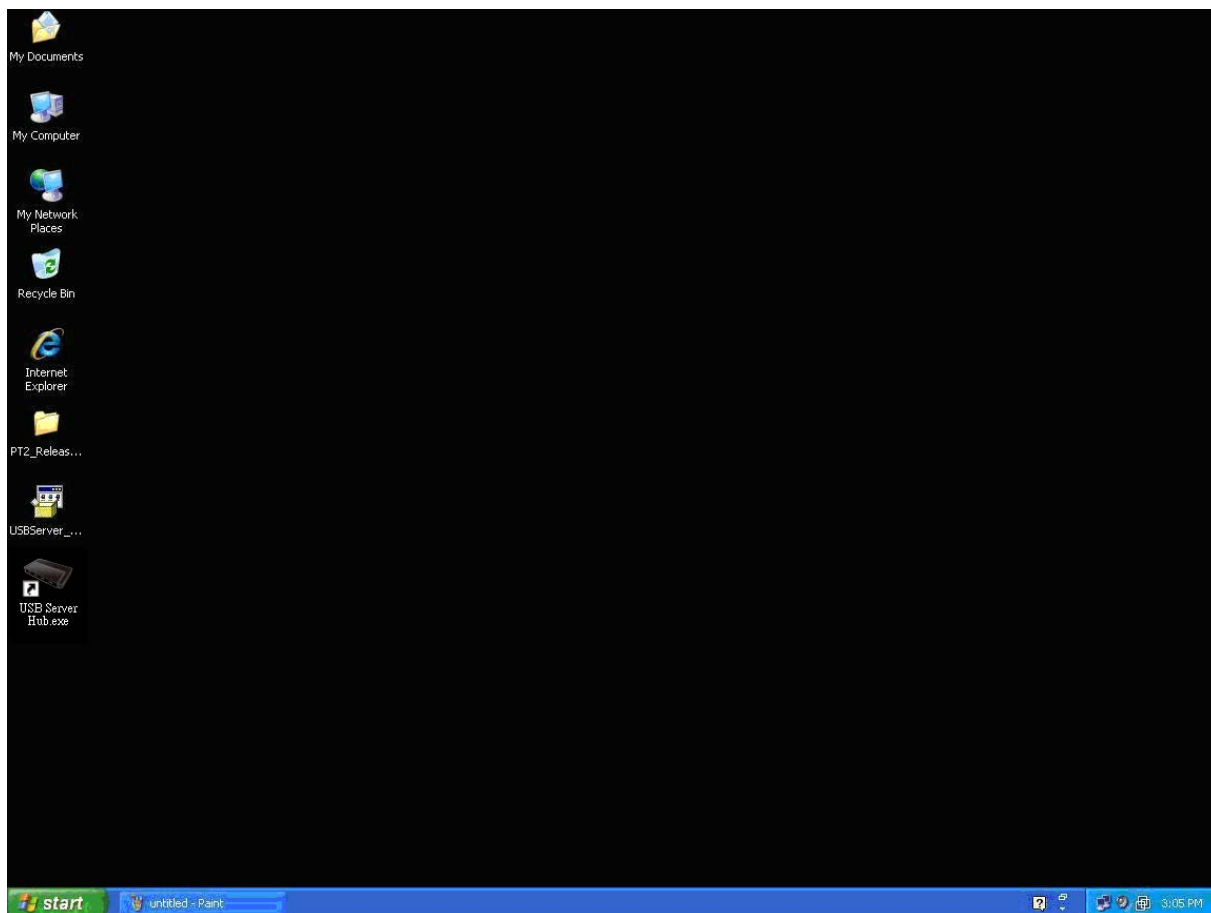


Please follow the instructions of the wizard to complete the installation process.

Please reboot the system as requested by the installer when the process ends, otherwise the software might not work properly.

Running Program

To start the USB Server Hub program, please double click the shortcut icon of the USB Server Hub on the Desktop.



This brings up the main dialog.

Network Printer Wizard Quick Guide

Printer Setup on Windows XP/VISTA

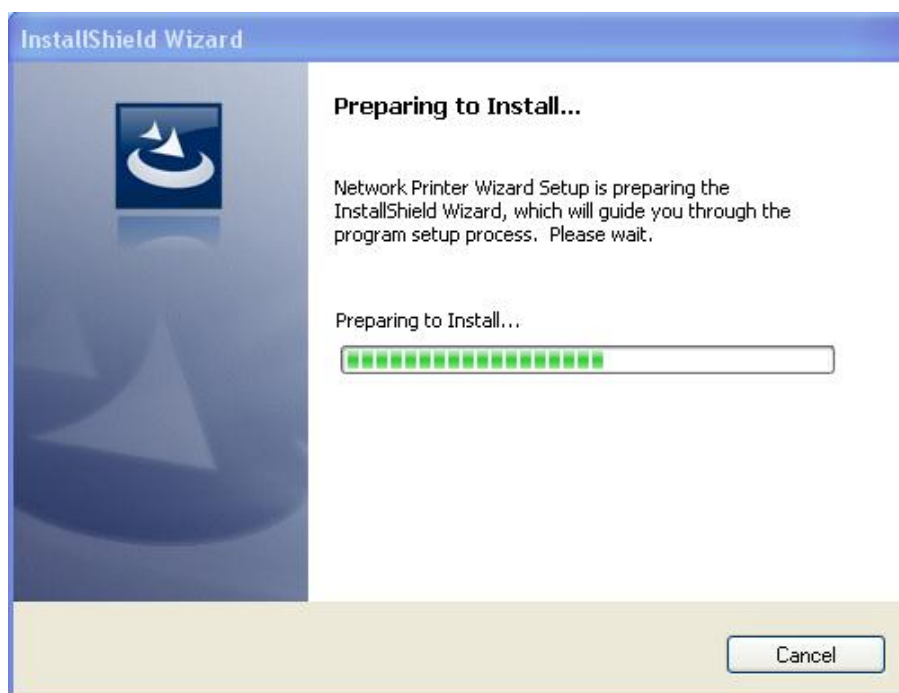
EST provides a straight forward and easy-to-use utility that helps you to set up USB printers connects to EST's LPR printer server as network printers, Network Printer Wizard. This utility reduces the dozens of steps in setting up network printer via Windows build-in printer setup program to a few point-and-clicks with the mouse. Users no longer need to deal with the confusing IP setting, queue name entering and port configuration.

Network Printer Wizard Installation

To start the installation, please double click on the installer:



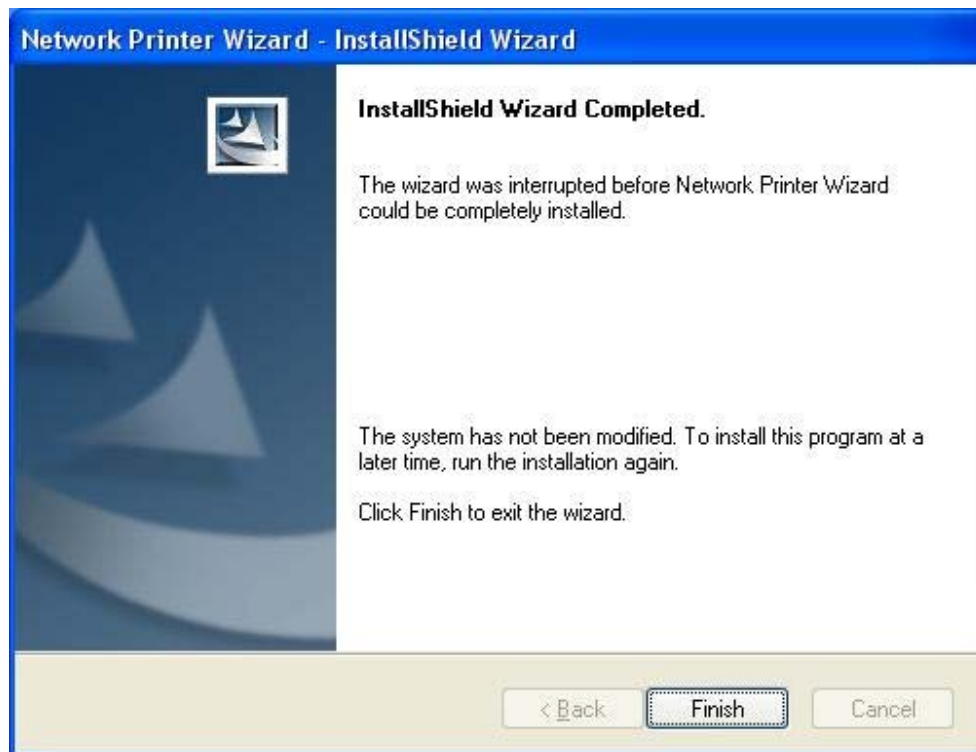
Wait for the installer to run:



Select the installation language and click on **OK**:



Click on **Finish** to exit installer once installation completes:

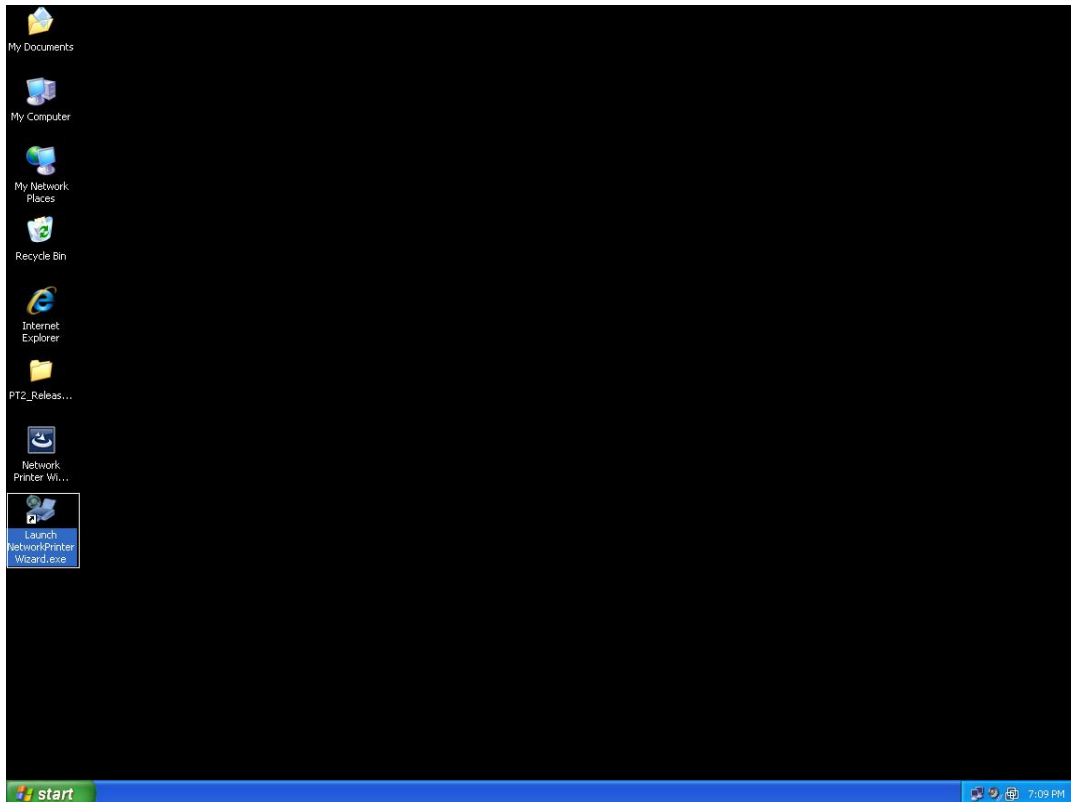


The installer creates a shortcut on the Desktop for you:



Printers Set up

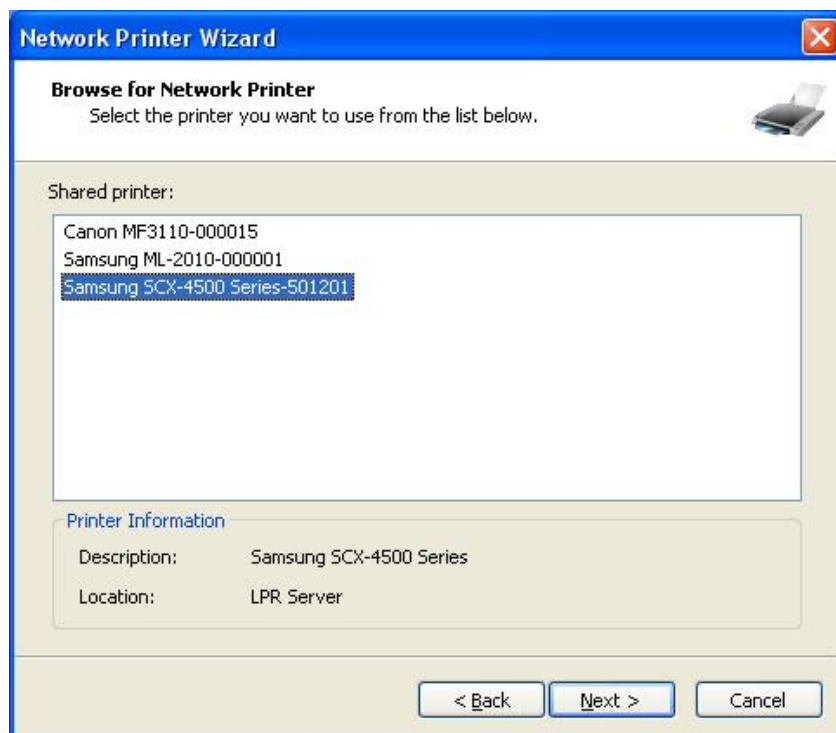
1. Now we can start setting up your printer. Please click on the Launch Network Printer Wizard icon created on the desktop.



2. Please click on **Next** to continue when you see this welcome dialog box.

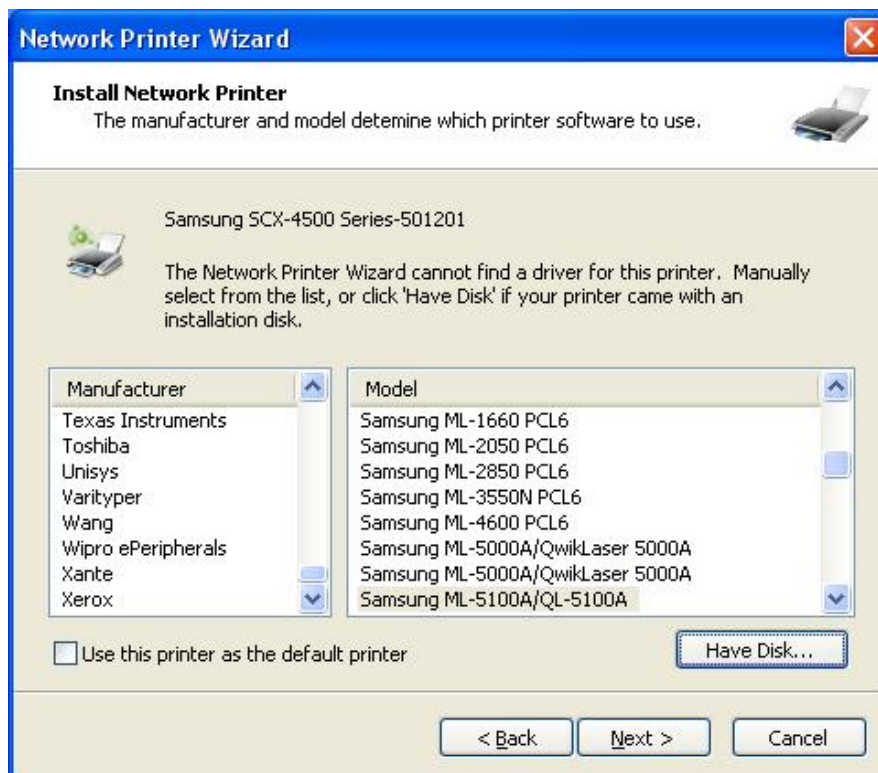


3. Please select the printer you would like to setup on this list and then Click on **Next**. The number of printers you see on this list depends on the number of printers that are connected to your network. If you only have one printer on the network, you see only one printer on this list. **If you don't see any printers, please make sure your printers and LPR Printer Server is correctly powered on and connected to the network.**

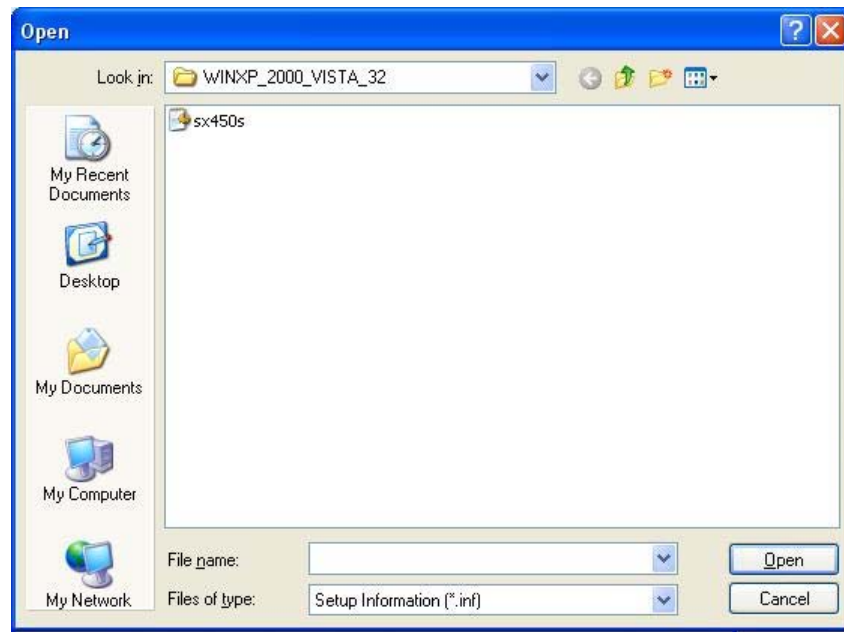


4. On the next dialog box, please select the driver from the list if it's there, and then click on the **Next** button and go to **step 7**. Else, read on.

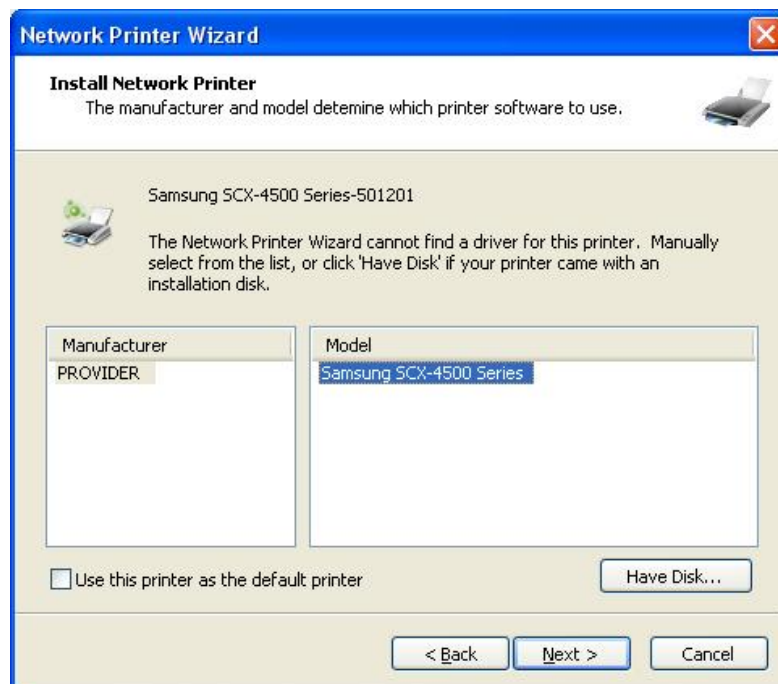
If you can't find the target printer's driver on the list, please insert the disk containing the printer's driver, click on **Have Disk...** button then go to step 5.



5. You must browse to the folder that contains the driver for your printer and click on **OPEN** to use it:



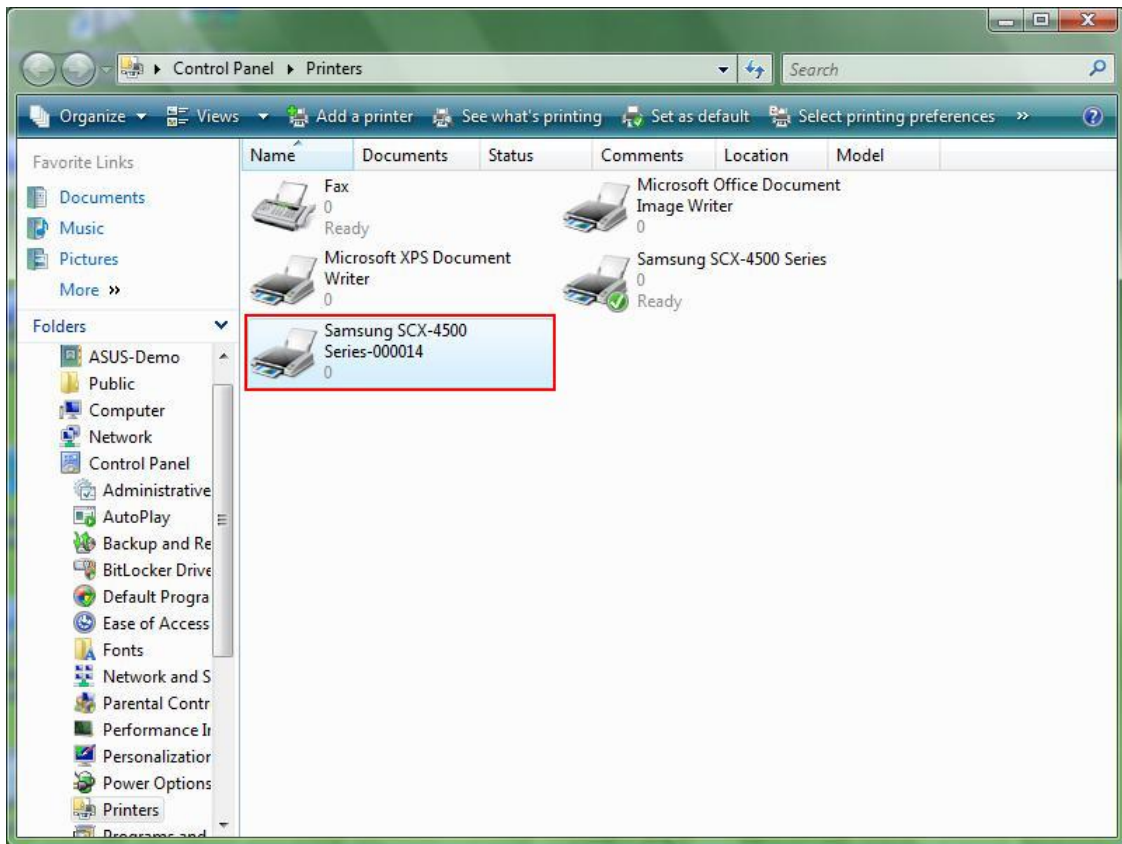
6. Then, select the driver from the list again and then click on the **Next** button. If you didn't select the correct driver, here is the chance for you to verify. Please click on **Have Disk** again to re-select.



7. Once you have selected the correct driver from the list, please click on **Finish** button. The wizard might take a minute to setup the network printer for you.

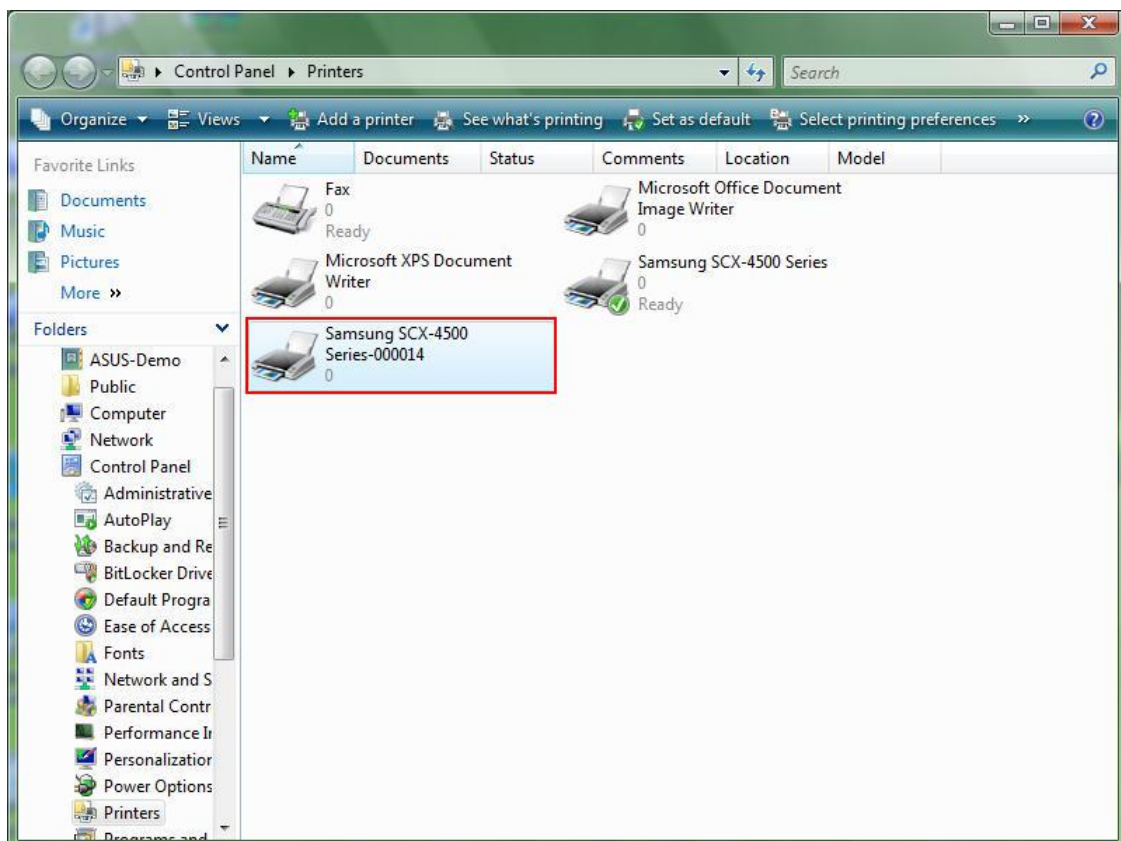


8. After the printer has been setup correctly, you can see it under **Control Panel > Printers**:



Remove the Printer Setting

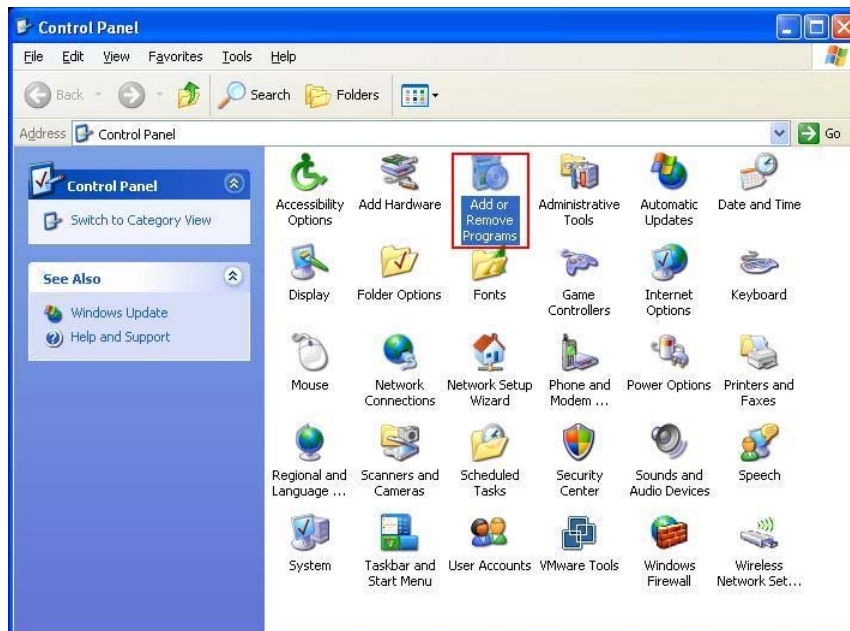
To remove the printer setup, please go to the **Control Panel > Printers** dialog box and remove the printer entry from it.



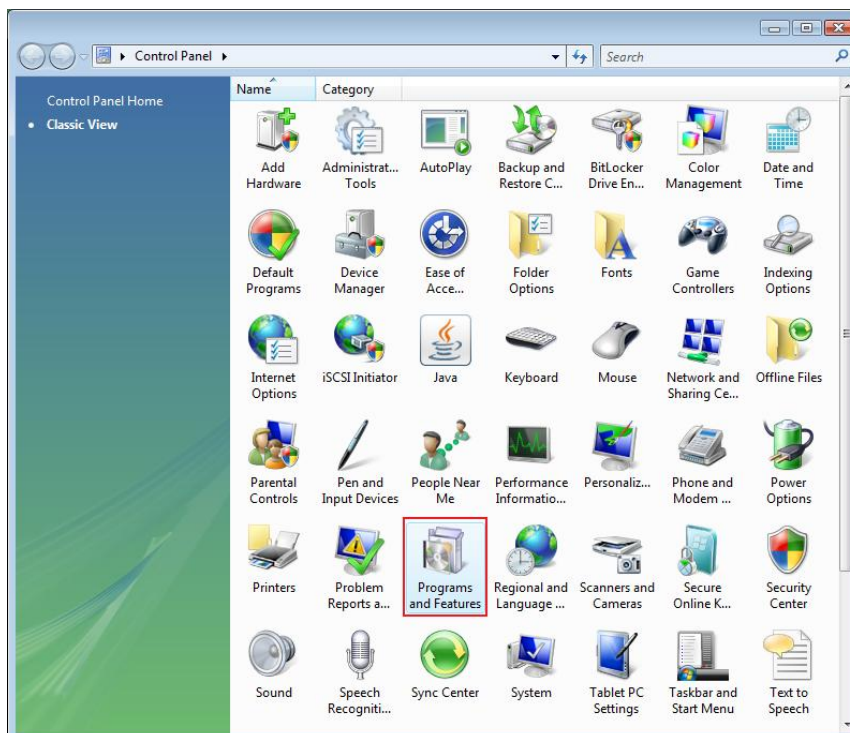
Simply **Delete** this icon by pressing **Del** key on your keyboard. Then it will be removed from the list of usable printers when you print document.

Remove the Program

To remove the Network Printer Wizard program, please go to the **Control Panel > Add or Remove Programs (Programs and Features on Windows VISTA)**

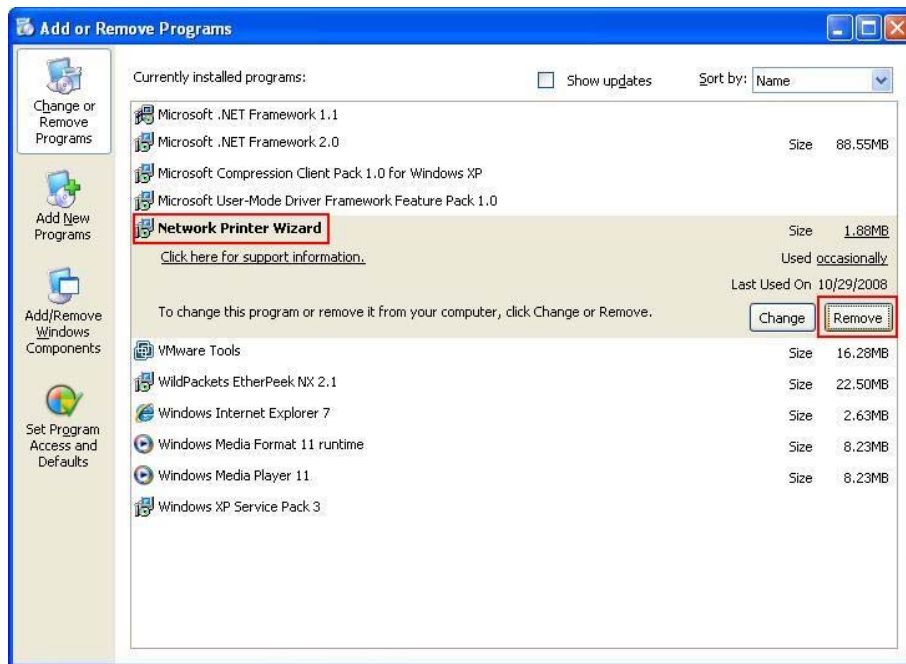


Window XP

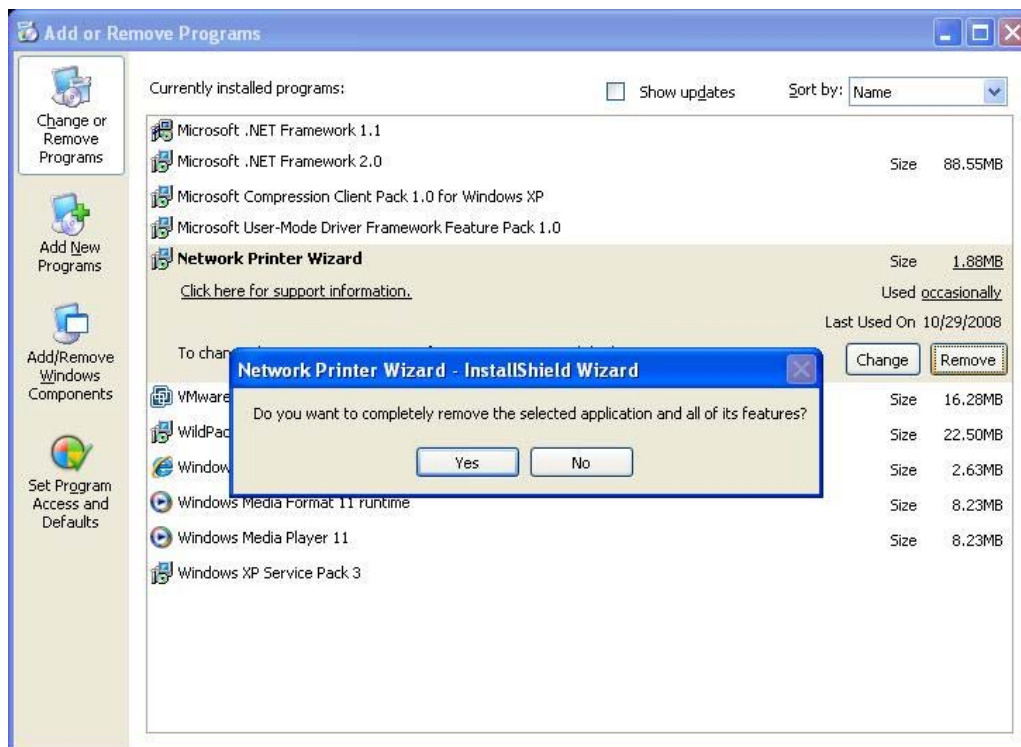


Windows VISTA

Then select to remove the program



Then follow the instructions of the installer complete the removing process:



PLEASE NOTE: Once you remove this problem, you will no longer be able to print using the printers you setup with Network Printer Wizard