

Gigabit USB 2.0 Ethernet Converter

User's Manual

1. Introduction

The Gigabit USB 2.0 Ethernet Converter performs good plug and play connection of PC peripherals“out -side the box” and mark a significant advance in desktop cable management . Using the USB 2.0 Ethernet Converter you can simplify your PC network connections in the home , office and on the travel.

2. Product Features

- USB specification Ver. 2.0 compliant.
- Supports USB Suspend/Resume Function.
- High-Speed USB Device.
- Supports wakeup frame, link status change and magic packet wake-up .
- Supports win98se/ ME/2000/ XP/mac os/linux/wince5.0
- Supports plug and play.

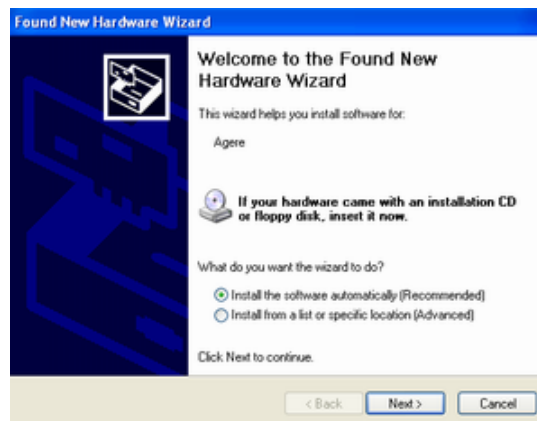
3. System Requirements

- IBM PC or compatible PC with 486DX-100 MHz CPU or higher
- Available USB port
- CD-ROM drive
- At least 16MB of DRAM

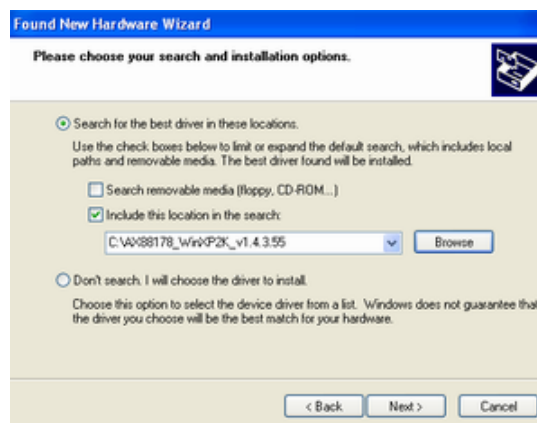
4. Installing Gigabit USB 2.0 Ethernet Converter:

Follow the steps below on installing the Gigabit USB 2.0 Ethernet Converter software:

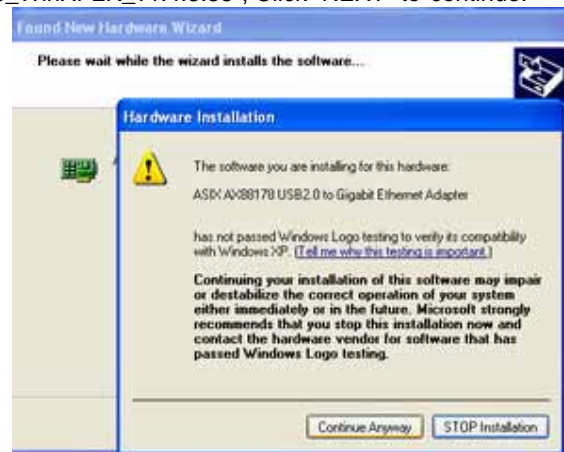
1. Power on your computer and make sure that the USB port is enabled and working properly.
2. Plug in the Gigabit USB 2.0 Ethernet Converter into the USB port, there appears a windows about“New Hardware Found” on the desktop.



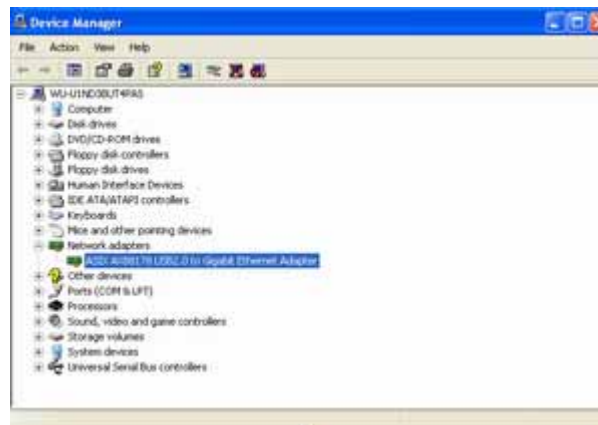
3. Following, there appears a windows about“Insert Disk” on the desktop and then click “install from a list or specific location (advanced) “to continue.



4. Insert the Gigabit USB 2.0 Ethernet Converter compact disc into the CD Rom drive and choose "AX88178_WinXP2K_v1.4.3.55", Click "NEXT" to continue.

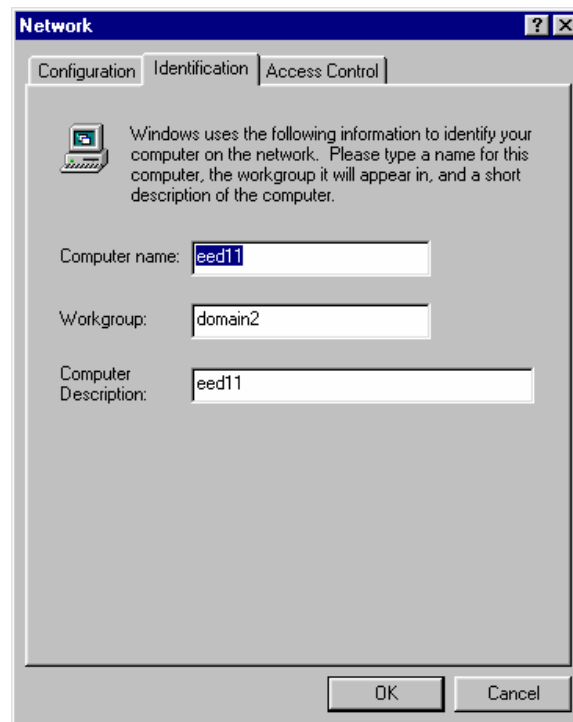


5. And then ,System will automatic install the driver Gigabit USB 2.0 Ethernet Converter driver.
6. After finished the installation will see " Gigabit USB 2.0 Ethernet Converter" under "Network adapters" of "System Properties".

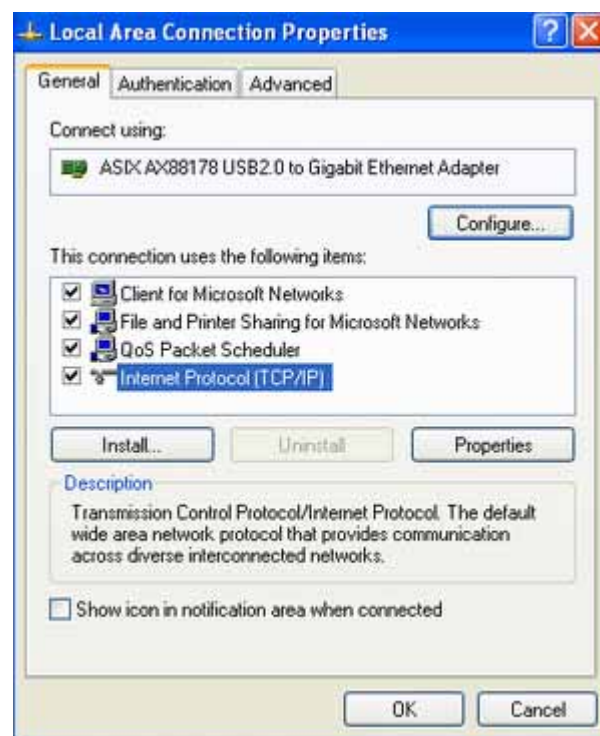


5. For Example

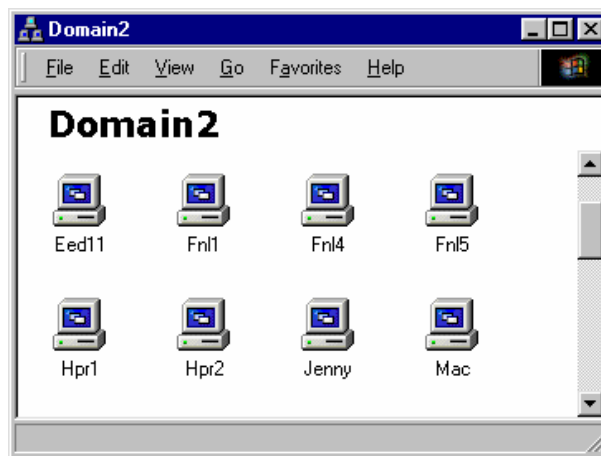
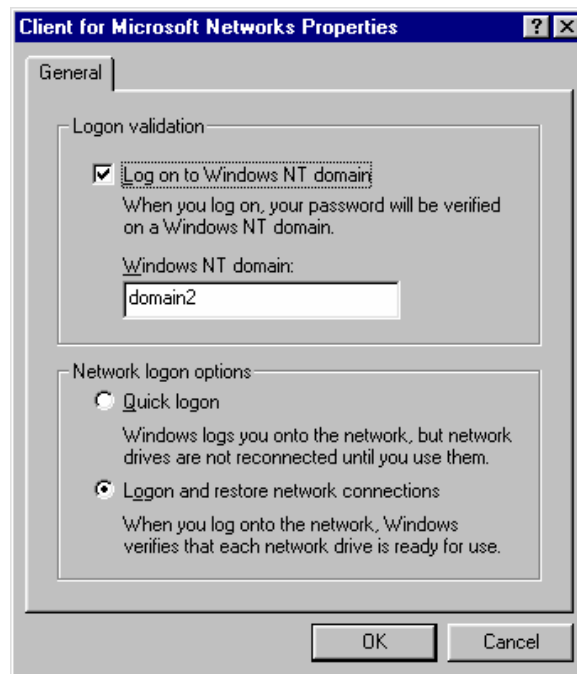
1. If you use inner network,the server is Windows NT,Please set a servers domain name for "Workgroup"(for instance: domain2);And the "Computer name" must differ the other computer,you can needn't set "Computer Description".



2. In "Configuration",you must install the protocol for NetBEUI and TCP/IP.



3. Under "Client for Microsoft Networks Properties",choose "Log on to Windows NT domain",under "Windows NT domain" input domain name of inner network(for instance:Domain2).Here,you computer has entered the inner network you may use the data of inner network.



4. If your inner network can visit Internet, setup the protocol of "TCP/IP", you may look for the information in internet.

At first, set up the IP Address:

You must obey the regulation "IP address".
for instance:

server of "IP address" : 192.168.100.1

inner network of increase by degrees of "IP address" : 192.168.100.2 ~192.168.100.255

" Subnet Mask" of and the other computer: 255.255.255.0

"New gateway" of and the other computer: 192.168.100.1

