

Table of Contents

1. Basic Computer Requirement.....	02
2. USB PC Camera	02
2.1 USB PC Camera Package.....	02
2.2 How to Adjust the Focus.....	02
3. How to Install and Use the PC Camera	03
3.1 How to Install Camera Driver and Application Software	03
3.1.1 Install Driver.....	03
3.1.2 Install Application Software.....	03
3.2 Plug & Play Installation under Windows.....	03
3.2.1 Install PC Camera and PC Camera driver.....	03
3.2.2 To Restart Your Computer.....	04
3.3 How to Use Your PC Camera	04
3.3.1 Adjusting Picture parameter.....	04
3.3.2 Recording & Capture the picture.....	05
3.3.3 Capture Single or Multi Pictures.....	05
4. How to Install Microsoft NetMeeting (For Windows 98/Me/2000)	06
4.1 How to Install Microsoft NetMeeting	06
4.2 How to Start With PC Camera	06
5. How to Install MSN® Messenger (For Windows 98/Me/2000/XP)	06
5.1 How to Install MSN Messenger.....	07
5.2 How to Start with PC Camera.....	07

1. Basic Computer Requirement

- A computer system equipped with Pentium II 200 / MMX /AMD K6 or above.
- One available USB port.
- Operating System: Windows 98 / 2000 / ME / XP.
- DRAM: 32 MB or above.
- 50MB of free hard drive space.
- CD ROM.
- Sound card, speaker, and microphone are required for video and audio recording.
- A modem or LAN card is required for applications of video conference and video mail.
- Display Resolution: 640*480 VGA.

2. USB PC Camera

2.1 USB PC Camera Package

- PC Camera x 1 set.
- CD x 1 piece: including Driver, Application Software and User's Manual.

2.2 How to Adjust the Focus

- Focus Wheel: Adjustable lens able focus from 5 cm – 60 cm – infinity.
- Default Focus in 60 cm of distance.

3. How to Install and Use the PC Camera

3.1 How to Install Camera Driver and Application Software

CAUTION!!!

DON'T PLUG IN THE PC CAMERA BEFORE INSTALLED THE DRIVER.

Insert the CD into your CD-ROM, the installer screen will automatically come up.

3.1.1 Install Driver

Click the "*Install VGA PC Camera 300K Pixel*" button to start installing.

Note 1: Please do not click "*Install CIF PC Camera 100K Pixel*" which is for 100K Pixel model 611 series.

Note 2: If the installer screen does not come up automatically, click "**Start**", then "**Run**" and execute "**autorun.exe**" on the CD to start the installer program.

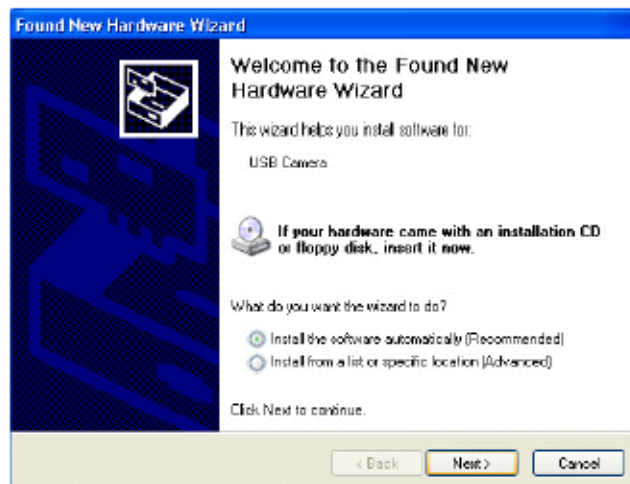
3.1.2 Install Application Software

Check the manual of the Software you would like to install, then click the button to start installing, then follow the instructions to proceed installation. When installation completes, the Application Software group will appear as a folder on the Programs Menu. To start the Application software, click "**Start**", point to "**Programs**", and then click the Application software.

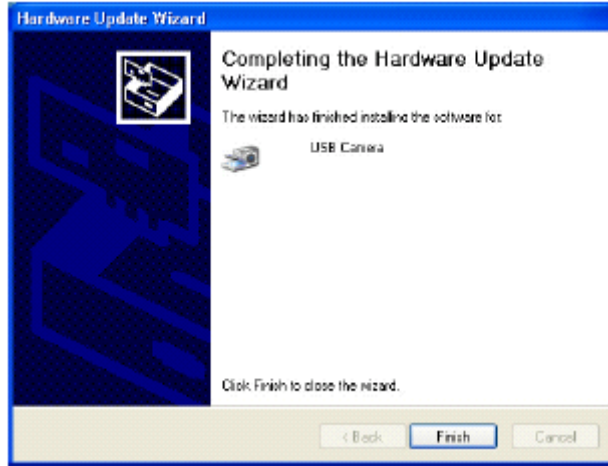
3.2 Plug & Play Installation under Windows

3.2.1 Install PC Camera and PC Camera driver

- 3.2.1.1. Plug PC camera's connector to the USB port on your computer. Check to make sure you have the correct orientation while plugging the USB connector into the USB port of your computer.
- 3.2.1.2. Once **Windows** has detected new hardware added to the system, an USB Device message appears on the screen, asking you to search a new device.
- 3.2.1.3. In this dialog box, you will be asked to select a method to search for driver for your PC Camera. Choose "**Install from the software automatically (Recommended)**".



- 3.2.1.4. **Windows** will search for your PC Camera device and driver location. Then, displays the detected device and the driver location.
- 3.2.1.5. Click "**Next**" from the following screen, Windows will copy Driver files into your system.
- 3.2.1.6. When **Windows** has finished installing the necessary drivers, the following screen displays.



Click "**Finish**" to complete PC Camera driver installation.

3.2.2 Restart Your Computer

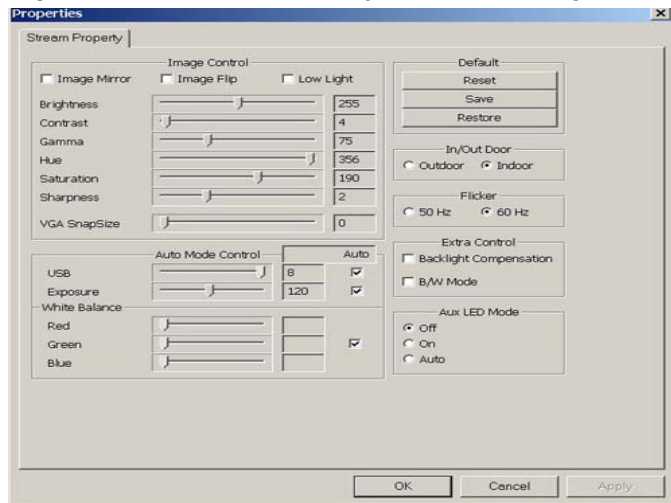
Once you have finished PC camera driver installation, you must restart your computer. Click "**Start**", "**Shut Down**", and select option "**Restart**" to restart.

3.3 How to Use Your PC Camera

3.3.1 Adjusting Picture parameter.

- The PC Camera is able to adjust the picture parameters into your favor quality setting. Please read the follow instruction for adjustment;
- Click "**Star**" -> "**Program**" -> "**PC VGA Camera**" -> "**AmCap**".
- Click "**Options**" -> "**Preview**": display the image on the AmCap window.
- Click "**Options**" -> "**Video Capture Filter**": You can adjust the following values:

- **Video Output:**
 - ***Mirror function**
 - ***Vertical Flip**
 - ***Low light**
- **Auto Exposure**
- **White Balance**
- **Flicker: 50Hz or 60Hz**
- **Brightness**
- **Contrast**
- **Gamma**
- **Hue**
- **Saturation**
- **Sharpness**
- **Restore Default**
- **Outdoor/Indoor**



After configure all the values, click "**OK**" back to video picture.

- Click "**Options**" -> "**Video Capture Pin**": Frame rate sets on "**30fps**", color select "**RGB24**" or "**I420**". Five pixel sizes are selectable: **160x120**, **176x144**, **320x240**, **352x288**, **640x480**. Click "**OK**" back to Video capture screen.

3.3.2 Recording & Capture the picture

3.3.2.1 Live Recording :

- Under operating the “**AmCap**”, click “**File**”, click “**Set Capture File**”, input file name, select file name<. avi>, click “**Open**” and click “**OK**”.
- Click “**Capture**”, if select “**Capture Audio**”, will capture the picture with voice. Ignore “**Master Stream**” function.
- Click “**Set Frame Rate**”; you can set how many Frames per second. Click “**Use Frame Rate**”, Click “**OK**” will complete your “**Set Frame Rate**” setting.
- Click “**Set Time Limit**” is to set the record time. After setting, click “**Use Time Limit**”, click “**OK**”, you may start to record the video. Click “**Capture**”, aiming the PC Camera to the target, click “**Start Capture**” will indicate “**ready to record**”, click “**OK**” will start recording. Timer starts to count down, and will stop until times out, record completed.

Remark: Press “**ESC**” key to stop recording if didn't set the recording time.

3.3.3 Capture Single or Multi Pictures.

- Click “**Start**” -> “**Programs**” -> “**PC Camera**” -> “**eMedia**” to see if capture video function is working.
- Aiming PC Camera to the target, click “**Capture Image**”. The Image will be storage and display in the **Album** window.
- Browsing the files by double click the image.

4. How to Install MicroSoft NetMeeting (For Windows 98/ME/2000)

4.1 How To Install NetMeeting

4.1.1 For Windows 98/Me Users

Click **'Start'**, point to **"Programs"**, point to **"Accessories"**, point to **"Internet Tools"** and then click **"NetMeeting"**.

For Windows 2000 Users

Click **"Start"**, point to **"Programs"**, point to **"Accessories"**, point to **"Communications"**, and click **"NetMeeting"**.

4.1.2 Click "Next", type the appropriate information in the First Name, Last Name, E-Mail, Address, Location, and Comments dialog boxes, and then click "Next".

NOTE: The Location and Comments information is optional.

4.1.3 Click "Next", click to select the Log into a directory server when NetMeeting starts check box (this is optional), and then type the name of the directory server in the Server Name dialog box. If you do not want your name to be visible in the directory, click to select the "Do not list my name in this directory" check box.

4.1.4 Click "Next", and then select the appropriate location for the shortcuts.

4.1.5 Click "Next", follow the instructions in the "Audio Tuning Wizard", and then click "Finish". After you run NetMeeting for the first time, you can modify the information you entered about yourself or the directory server name that you want to connect to. To do so, click "Options" on the Tools menu, click the "General" tab, and then enter the appropriate information. Also, you can run the "Audio Tuning Wizard" again, and to do so, click "Audio Tuning Wizard" on the Tools menu.

If you can't install the NetMeeting from your PC directly, please log on to <http://www.microsoft.com/windows/netmeeting/> to download.

4.2 How to start with PC Camera

4.2.1. Plug the PC camera into your PC first.

4.2.2. Click the "NetMeeting" to go to the main screen, and then click "Start Video" button, then you can start working with NetMeeting.

4.2.3. If you need more information or instruction on how to use a specific feature or tool, click the "Help" button in the upper right-hand corner of the screen.

5. How to Install MSN Messenger

5.1 How To Install MSN Messenger

5.1.1 For Windows 98/ME/2000

- 5.1.1.1 Please log on to <http://messenger.msn.com> to download. After the installation package is downloaded to your computer, it will start installing **MSN Messenger**. All you have to do is follow the instructions.
- 5.1.1.2 After the installation is completed, click "**Start**", point to "**Programs**", and click "**Windows Messenger**".

5.1.2 For Windows XP

- 5.1.2.1 Click "**Start**", point to "**Programs**", and click "**Windows Messenger**".
- 5.1.2.2 After you run **Messenger** for the first time, you can add friends to your list and send instant messages.

5.2 How To Start With PC Camera

- 5.2.1 Plug the PC camera into your PC first.
- 5.2.2 Click the "**Messenger**" to go to the main screen.
- 5.2.3 Click the "**Actions**" menu on the main window, click "**Start a Webcam Conversation**", select the name of the person you want to send video to, and then click "**OK**". For the Web-camera conversation, both participants must have a Web camera and each person must invite the other.
- 5.2.4 To stop sending your video image during a conversation, click the arrow under your video window, and then click "**Pause Webcam**" or "**Stop Webcam**". You can continue to receive the other person's image, but your image will freeze in your contact's conversation window.